

Vehicle Registrations

December 2014

Release date: 6 February 2015

	Dec 14	Nov 14	Oct 14	Sep 14
New Registrations	227	181	211	170

Registrations rose over the month

Vehicle registrations rose by 25.4% over December recording the highest it has been since July 2006. The increase was due to a rise in almost all major vehicle categories. Government vehicles and other cars remained constant while buses declined from one to zero over the month. 'Light vehicles' rose the most, by 32 registrations over December, followed by taxis and rentals which rose from 12 to 20 registrations, reaching a new record high since November 2005.

Total vehicle registrations over the year to December 2014 increased by 26.9% due to lifts in all major vehicle categories, except for buses and motorcycles. Taxi and rental registrations more than doubled over this period, reflecting an expectation of increased visitors and tourists for the upcoming church conferences, school anniversaries and the coronation of His Majesty King Tupou VI. Latest data on vehicle payments made through the banking system and vehicle lending also give support to the rise.

On the outlook, the NRBT anticipates growth of vehicle registrations in the near future supported by an expected increase in donated government vehicles for the upcoming coronation in July. Moreover, car importers indicate that new shipments are on its way to Tonga with more to come in the near term. The continued decline of domestic fuel prices also support expectations. However, foreign reserves remain at a comfortable level and the developments contained in this release do not warrant a change in the NRBT's monetary policy settings in the near future.

Total Number of Vehicle Registrations

	Month ended				Year ended			Memo Share*
	Dec 14	Nov 14	Oct 14	Dec 13	Dec 14	Dec 13	% growth	
Total vehicles	227	181	211	161	2,011	1,585	26.9	100
Cars	96	96	70	75	779	598	30.3	39
Light vehicles+	88	56	92	72	810	733	10.5	40
Heavy vehicles++	22	16	25	9	204	142	43.7	10
Taxis and rentals	20	12	15	4	153	56	173.2	8
Motorcycles	1	0	1	0	20	21	-4.8	1
Government vehicles	0	0	6	1	31	17	82.4	2
Buses	0	1	2	0	14	18	-22.2	1

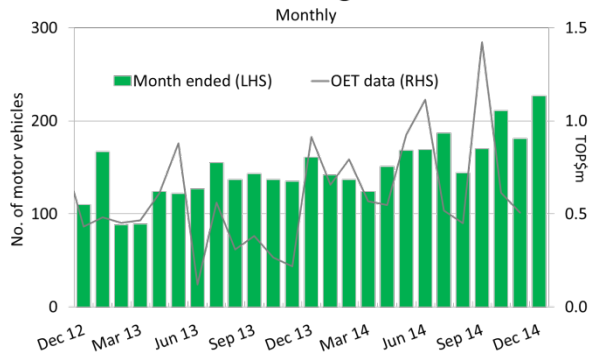
* Based on year-ended vehicle registration numbers.

+Vehicles lighter than 1500kgs excluding cars

++Vehicles heavier than 1500kgs excluding Buses

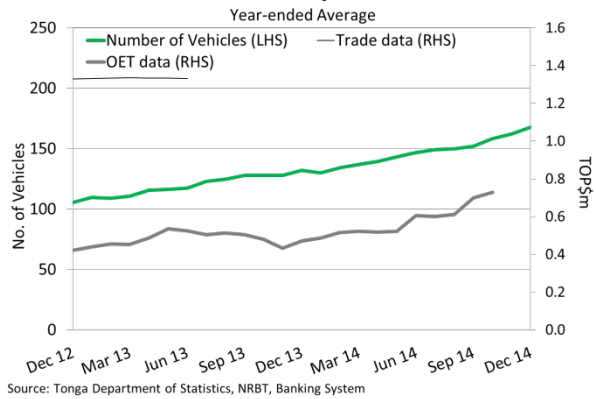
Source: Ministry of Infrastructure

Total Vehicle Registrations



Source: Tonga Department of Statistics, NRBT, Banking System
Source: Ministry of Infrastructure

Vehicle Activity Indicators



Source: Tonga Department of Statistics, NRBT, Banking System